

IP Network Video Transmitters for use with PAL or NTSC Cameras

IPTX-101 Single Channel Network Video Transmitter



IPTX-101

The IPTX-101 is a high performance video transmitter capable of transmitting up to 30 pictures per second on any IP Network.

It can deliver live or time-lapsed video simultaneously to a number of receiving devices and is fully compatible with the Sirrus IPVR range of network video recorders.

Multiple Simultaneous Feeds

Unlike many IP video transmitters, the IPTX-101 is capable of feeding several **different** streams of video **simultaneously** to different recipients or devices.

For example, the IPTX can feed a live video stream for one or several operatives to view, while **at the same time** delivering a time-lapse image sequence to a network digital video recorder such as the Sirrus IPVR-160 or IPVR-212.

Multiple Resolutions

Further, the IPTX-101 can feed differing resolution images to the different recipients—perhaps a CIF resolution (352x288) image stream for live viewing at modest bandwidth, and at the same time also a time-lapsed recording sequence in full 4CIF resolution (704x576).

For the first time this capability allows the two differing situations — that of viewing and recording — to be properly given the right kinds of video stream by one transmitter.

Ethernet and Broadband Compatible

The IPTX-101 can be connected to any 10 or 100Mbit Ethernet LAN. It can also be used via a standard router through any wide-area network including the internet.

Integrated Webserver, FTP Server, Email Transmitter

Integrated within the IPTX-101 are both an HTTP Server and FTP Server. Images can be viewed with a standard browser, or uploaded automatically to a remote server by FTP. Alarm-triggered images can be sent by FTP or even by direct E-mail from the device.

Recording Solutions

To see how the IPTX can form part of an integrated network-viewing and digital video-recording solution, see the Sirrus website for details of our companion IPVR-160 and 200 series digital recorders.

Sirrus Group plc
Runnymede Malthouse Runnymede Road Egham
Surrey TW20 9BD UK
t 07000-SIRRUS or 01784-430555
f 01784-497006 e sales@sirrus.co.uk
w www.sirrus.co.uk

Specifications are subject to change without notice

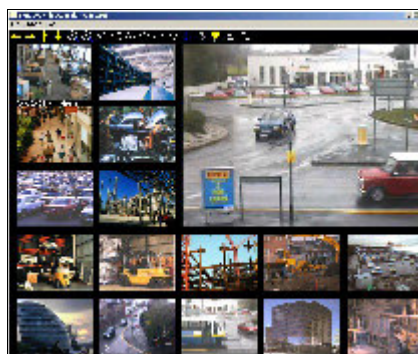
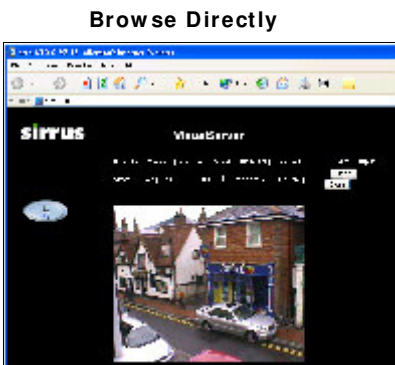
Represented by :

--

Specification

Video		Dimensions	
Compression:	MJPEG	Length:	122.9 mm
Video I/O:	1 analogue video input. BNC Connector. 1V P-P into 75 Ohms	Width:	72.3 mm
Features:	Adjustable image size and quality. B/W or colour control. Time stamp and text overlay.	Height:	50 mm
Resolution:	Up to 25 FPS at QCIF (176 x 144). Up to 25 FPS at CIF (352 x 288). Up to 8 FPS at 4CIF (704 x 576). (PAL). Also upto 30 FPS NTSC.	Weight	
Serial Port		NET:	340g
COM1:	9 pin D-SUB RS232 or RS485 (PTZ camera control or modem) max. 115.2 kbps.	Security	
Networking		Administrator and user group protected. Password authentication. Demo account with limitation by administrator.	
Protocol:	TCP/IP, HTTP, SMTP, FTP, Telnet, NTP, DNS and DHCP.	Pan/ Tilt Zoom	
Ethernet:	10 base T or 100 base T Fast Ethernet auto negotiation.	Multiple PTZ camera control through RS232 or RS485. Please call Sirus for latest compatibility list.	
Modem:	PPP(dial-up, direct cable connection).	Power	
System		Included PSU: 100-240VAC, 50/60Hz, 0.4 A. Output : 12VDC, 1.5A. Codec Power Consumption 4.2 W.	
CPU:	Trimedia PNX1300	Environment	
RAM:	16MB SDRAM	Temperature:	0~ 50 C(32~ 122 F)
ROM:	2MB Flash Rom	Humidity:	95% RH
		EMI and Safety	
		CE, FCC	

View with Sirus VideoConsole Suite



Record with Sirus IPVRs

