

IP Network Video Cameras

IP121 Colour Camera

The IP121 is a high performance IP colour video camera capable of transmitting up to 25 pictures per second on any IP Network.

It can deliver live or time-lapsed video simultaneously to a number of receiving devices and is fully compatible with the Sirrus IPVR range of network video recorders.



Remote PTZ control

The IP121 is particularly suitable for external applications when mounted in a Sirrus weatherproof housing. Auto iris / DC iris lenses can be used to cope with the extremes of outdoor lighting. The camera also allows remote control of telemetry receivers through its RS232/485 port to drive Pan/tilt units and zoom lenses.

Multiple Simultaneous Feeds

Unlike many IP video cameras, the IP121 is capable of feeding several **different** streams of video **simultaneously** to different recipients or devices.

For example, IP121 can feed a live video stream for one or several operatives to view, while **at the same time** delivering a time-lapse image sequence to a network digital video recorder such as the Sirrus IPVR-170 or IPVR-212.

Multiple Resolutions

Further, the IP121 can feed differing resolution images to the different recipients—perhaps a CIF resolution (352x288) image stream for live viewing at modest bandwidth, and at the same time also a time-lapsed recording sequence in full 4CIF resolution (704x576).

For the first time this capability allows the two differing situations — that of viewing and recording — to be properly given the right kinds of video stream by one transmitter.

Ethernet and Broadband

The IP121 can be connected to any 10 or 100Mbit Ethernet LAN. It can also be used via a standard router through ISDN, or PSTN or via ADSL or other broadband WAN link technologies.

Integrated Webserver, FTP Server, Email Transmitter

Integrated within the IP121 are both an HTTP Server and FTP Server. Images can be viewed with a standard browser, or uploaded automatically to a remote server by FTP. Alarm-triggered images can be sent by FTP or even by direct E-mail from the device.

Recording Solutions

To see how the IP121 can form part of an integrated network-viewing and digital video-recording solution, visit the Sirrus website for details of our companion IPVR series Network Video Recorders.

Sirrus Group plc
Runnymede Malthouse Runnymede Road
Egham Surrey TW20 9BD UK
t 07000-SIRRUS or 01784-430555
f 01784-497006 e sales@sirrus.co.uk
w www.sirrus.co.uk

Specifications are subject to change without notice

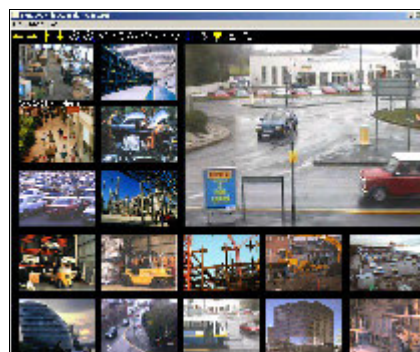
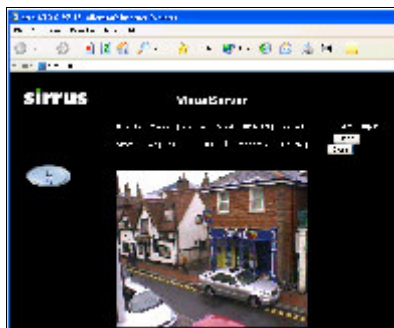
Represented by :

Specification

Video		Serial Port	
Compression:	MJPEG	COM1:	9 pin D-SUB RS232 or RS485 (PTZ camera control or modem) max. 115.2 kbps.
Video I/O:	1 analogue video output BNC Connector PAL Colour. 1V P-P into 75 Ohms	Dimensions	
Features:	Adjustable image size and quality B/W or colour control. Time stamp and text overlay.	Length:	143.6 mm
Resolution:	Upto 25 FPS at QCIF (176 x 144) Upto 25 FPS at CIF (352 x 288) Upto 8 FPS at 4CIF (704 x 576)	Width:	93.8 mm
		Height:	71.6 mm
		Weight	
		NET:	700g
Networking		Security	
Protocol:	TCP/IP, HTTP, SMTP, FTP, Telnet, NTP, DNS and DHCP.	Administrator and user group protected. Password authentication. Demo account with limitation by administrator.	
Ethernet:	10 base T or 100 base T Fast Ethernet auto negotiation.	General I / O	
Modem:	PPP (dial-up, direct cable connection)	1 sensor input max. 12VDC 50mA 1 relay output max. 24VDC 1A / 125VAC 0.5A	
System		Power	
CPU:	Trimedia PNX1300	Included PSU: 100-240VAC, 50/60Hz, 0.4 A.	
RAM:	16MB SDRAM	Output : 12VDC, 1.5A.	
ROM:	2MB Flash Rom	Camera Power Consumption 5.4W.	
Camera		Environment	
Sensor:	1/3" CCD, 512(H) x 582(V) pixels	Temperature: 0~50 C(32~122 F)	
Electronic Shutter:	1/50—1/100,000 sec.	Humidity: 95% RH	
Sensitivity:	1 Lux / F2.0	EMI and Safety	
Functions:	AGC, AWB, AES	CE, FCC	
Lens			
Standard CS mount. C mount adaptor supplied. Fixed Iris 6.0mm F1.8 lens supplied, approx 45° HFOV Standard 4 pin DC iris connector. Switchable to auto iris or electronic iris.			

View with SIRRUS VideoConsole Suite

Browse Directly



Record with SIRRUS IPVRs

